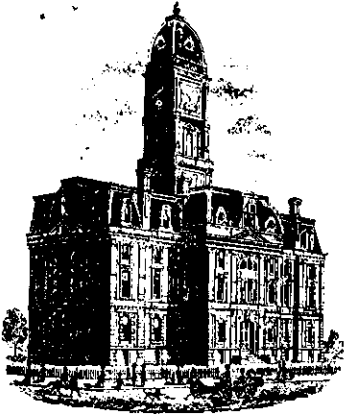


Drain: OVERMAN-HARVEY DRAIN **Drain #:** 32
Improvement/Arm: VILLAGE FARMS-SECTION 2
Operator: JDH **Date:** 5-21-04
Drain Classification: Urban/Rural **Year Installed:** 1976

GIS Drain Input Checklist

- Pull Source Documents for Scanning JDH
- Digitize & Attribute Tile Drains N/A
- Digitize & Attribute Storm Drains JDH
- Digitize & Attribute SSD JDH
- Digitize & Attribute Open Ditch N/A
- Stamp Plans JDH
- Sum drain lengths & Validate JDH
- Enter Improvements into Posse JDH
- Enter Drain Age into Posse JDH
- Sum drain length for Watershed in Posse JDH
- Check Database entries for errors JDH



SURVEYOR'S OFFICE
Hamilton County

Kenton C. Ward, Surveyor

Suite 146

776-8495

One Hamilton County Square

Noblesville, Indiana 46060-2230

September 15, 1993

TO: Hamilton County Drainage Board

RE: Overman-Harvey Drain

Attached are two petitions regarding the Overman-Harvey Drain. The first was filed April 3, 1987 for the remainder of the drainage facilities for Section 2. The second petition was filed February 4, 1993 for the inclusion of the existing open ditch along the East line of the Murphy property and East along the North side of 146th Street as regulated drain.

I have reviewed the submittals and petitions and found each to be in proper form.

I have made a personal inspection of the land described in each petition. Upon doing so, I believe that the drain is practicable; will improve the public health; benefit a public highway and be of public utility; and that the costs, damages and expenses of the proposed drain will probably be less than the benefits accruing to the owners of land likely to benefited.

The petition filed for section 2 was filed by various landowners within that section. The drainage facilities constructed for that section were not petitioned to become regulated drain. This is due to the fact that this section predates that requirement. Portions of the drainage facilities now are part of the regulated drain. The drainage system at the rear of Lots 172 to 179 was the original tile of the Overman-Harvey Drain. The drainage system in the rear of Lots 106 to 111; 117 to 122; between Lots 122 and 123; between Lots 115 and 116; between Lots 131 and 132; and at the rear of Lots 128 to 131; 142 to 148 and Lot 153 was accepted as the relocation of a portion of the original Overman-Harvey Drain. (see my report to the Board

dated September 28, 1981)

The remainder of the system to be included as regulated drain is as follows: Open swale between Lots 106 to 123 from storm sewer outlet South; open ditch between Lot 111 and Lot 114 and 115; storm sewer from curb inlet in front of Lot 101, West under Goodtime to a curb inlet; Southwest to a manhole at the front of Lots 105 and 106, Northwest between Lot 105 and 106 to outlet. Storm sewer from curb inlet in front of Lot 135, Southeast under Stars Pride to a curb inlet, Southeast between Lots 117 and 118 to outlet. Storm sewer from curb inlet in front of Lot 149 East across Dan Patch to a curb inlet, East between Lots 144 and 145 to a manhole in storm sewer which is now part of the regulated drain. Storm sewer in front of Lot 96 West under Goodtime to curb inlet between Lots 109 and 110, South to manhole in front of Lot 111, Southeast to manhole between Lots 111 and 112, Southwest between Lots 111 and 112 and 113 to outlet. Storm sewer from curb inlet at Northeast corner Lot 112, Southeast under Goodtime to curb inlet at Southwest corner of Lot 95, Northwest under Goodtime to manhole in front of Lots 111 and 112. Storm line from manhole between Lots 95 and 96 West under Goodtime to manhole in front of Lot 111. Storm line from yard inlet between Lots 156 and 157 Northeast to yard inlet near Count Fleet, Southeast to curb inlet at Northeast corner of Lot 158, under Bali Hai to curb inlet in front of Lot 164, Southwest between Lots 164 and 165 to yard inlet at rear corner of Lots 164 and 163, South between Lots 163 and Lots 165, 166 and 167 to a manhole at the intersections of Lots 163, 167, 168 and 169, Southwest between Lots 168 and 169 to a manhole, Southeast to a curb inlet at the Southeast corner of Lot 168, continue under Count Fleet to a curb inlet at the Southwest corner of Lot 138, continue to a manhole between Lots 137 and 138, thence to a curb inlet at the Southeast corner of Lot 137, under Stars Pride to a curb inlet at the Southwest corner of Lot 116, thence to a manhole in front of Lot 115 in the portion of the system which is now regulated drain. Storm system from manhole of Lots 136, 137 and 138 to manhole in front of Lots 137 and 138. Storm line between curb inlet in front of Lot 175 under Greyhound Pass to curb inlet at Southwest corner of Lot 138. Storm lines from curb inlet in front Lot 164 under Countfleet to curb inlet at Southeast corner of Lot 150 and curb inlet at Southwest corner of Lot 143. These lines are shown in RED on the attached plan for section 2, Village Farms.

The total length of the proposed addition is approximately 3263.39 feet. An inspection made by Mr. Jerry Liston of this office, shows that the existing facilities are in need of minor maintenance. I recommend the drainage facilities in this section to be in need of maintenance, not reconstruction.

The petition filed for the open ditch from the Murphy

property to the outlet for the Springmill Ponds Drain along 146th Street was filed by Mr. Thomas Murphy, Ralph Wilfong, Raymond Panke and Eugene Wright. This ditch begins at or near the Northwest corner of Lot 471, Village Farms, Section 7 and runs South along the rear of Lots 471, 469 and 468; thence East along the South line of Lots 468, 467, 466, 464, 463, 462, 461, 460, 459, 458, 457 and 456; thence under 146th Street in twin 33" RCP's to the point of beginning for the Springmill Ponds Drain. (see my report to the Board dated August 12, 1991 for Springmill Ponds Drain, Section 3

This will consist of 1790 feet of open ditch and 60 feet of twin 33" RCP's for a total of 1850 feet of new drain.

I believe the Overman-Harvey Drain meets the requirements for Urban Drain Classification as set out in IC 36-9-27-67 to 69. Therefore, this drain shall be designated as an Urban Drain.

I recommend the Board set the easement for the drainage system in section 2 at the minimum allowed. This will be 15' per each side of the center line of the tile and 25' off each top of bank on the open ditch. This easement is greater than the 10' half drainage easement which was platted. The easement for the Murphy open ditch shall be to the East and North Top of Bank or within the platted easement for Village Farms, Section 7, which ever is greater.

At this time the drain is assessed for maintenance at a rate of \$1.00 per acre, \$5.00 minimum. At this rate the annual assessment brings in \$3,387.00. The drain is currently in the RED \$4,000.00 with two (2) work orders outstanding with the Contractor. An increase in the maintenance assessment is recommended at this time.

I have reviewed the drainage shed and believe the drain will benefit each lot equally. Therefore, I recommend each lot be assessed equally. I also believe that no damages will result to landowners by the proposed addition to this drain. I recommend an increased maintenance assessment of \$25.00 per lot, \$5.00 per acre, with a \$25.00 minimum. With this assessment, the total annual assessment for the drain will be \$18,006.92

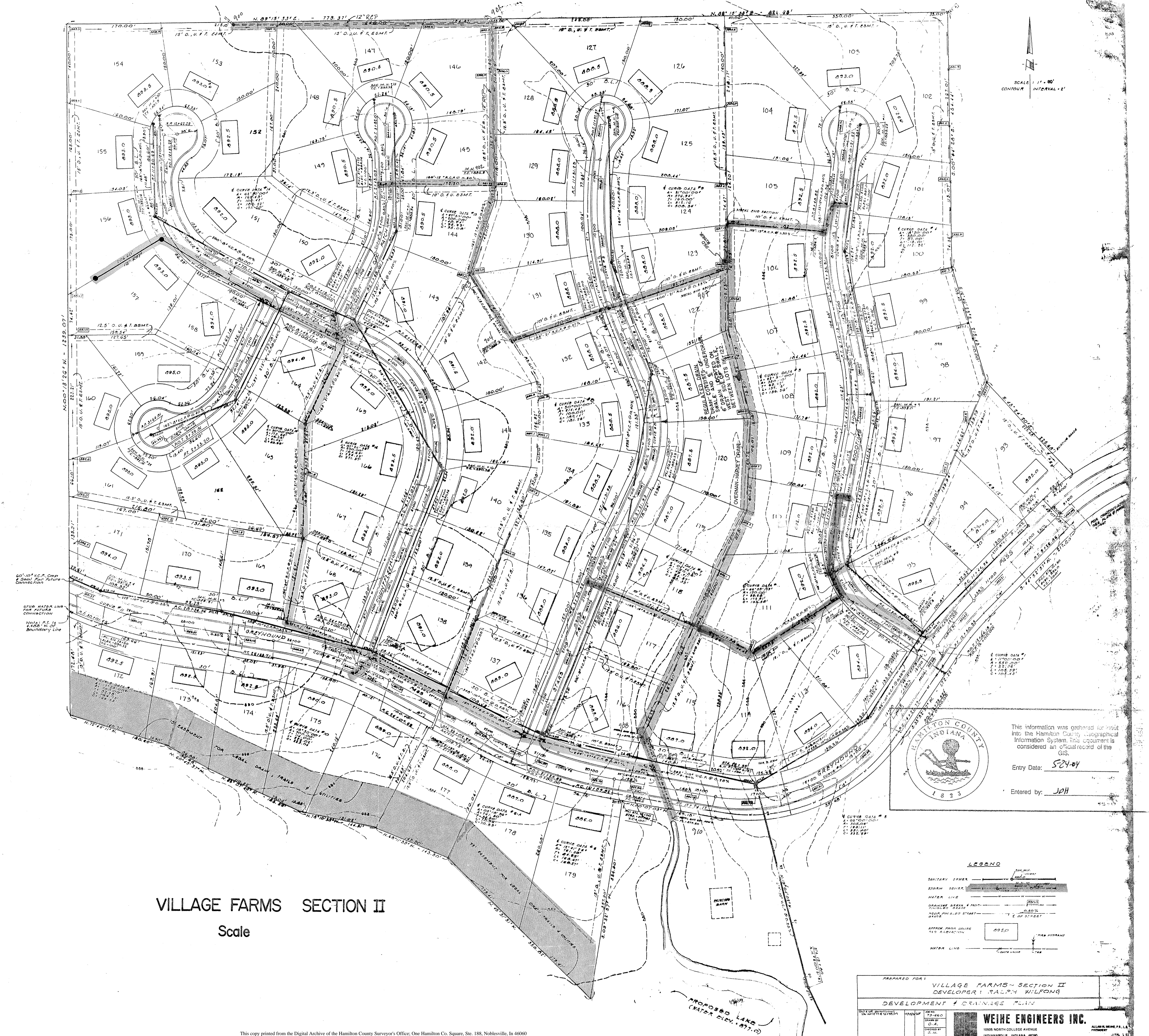
I recommend the Board set a hearing for this proposed drain for October 25, 1993.

Kenton C. Ward
Hamilton County Surveyor

PLAN HOLD CORPORATION • IRVINE, CALIFORNIA
REGISTERED PROFESSIONAL
LAND SURVEYOR

PLAN HOLD CORPORATION • IRVINE, CALIFORNIA
REGISTERED PROFESSIONAL
LAND SURVEYOR

REGISTERED PROFESSIONAL
LAND SURVEYOR



SCALE
CONTRACT 1" = 80'
INTERVAL 2'

STOP WATER LINE FOR FUTURE CONNECTION
NOTE: PL IS 1/4" = 100' N.O. OF BOUNDARY LINE

HAMILTON COUNTY INDIANA
1823

This information was generated for input into the Hamilton County Geographical Information System. This document is considered an official record of the GIS.

Entry Date: 5-24-04
Entered by: JPH

LEGEND

- STORM SEWER
- WATER LINE
- PROP. PAVED STREET
- PROP. DRIVE
- PROP. SIDEWALK
- PROP. BIKEWAY
- PROP. TRAIL
- PROP. FENCE
- PROP. UTILITY
- PROP. ELEVATION

VILLAGE FARMS SECTION II

Scale

PREPARED FOR: VILLAGE FARMS - SECTION II
DEVELOPER: RALPH WILFONG
DEVELOPMENT & DRAINAGE PLAN

WEIHE ENGINEERS INC.
10005 NORTH COLLEGE AVENUE
INDIANAPOLIS, INDIANA 46240

ALLIANCE ENGINEERS, P.C.
1412 N. COLLEGE AVENUE
INDIANAPOLIS, INDIANA 46204

REVISION	DATE	BY	DESCRIPTION



Kenton C. Ward, CFM
Surveyor of Hamilton County
Phone (317) 776-8495
Fax (317) 776-9628

Suite 188
One Hamilton County Square
Noblesville, Indiana 46060-2230

Map Correction-Field Verification

Drain Number: #32

Drain Length: 3263.39

Drain Name: Village Farms Section 2

Change + / - : -146

Date: 11-15-2010

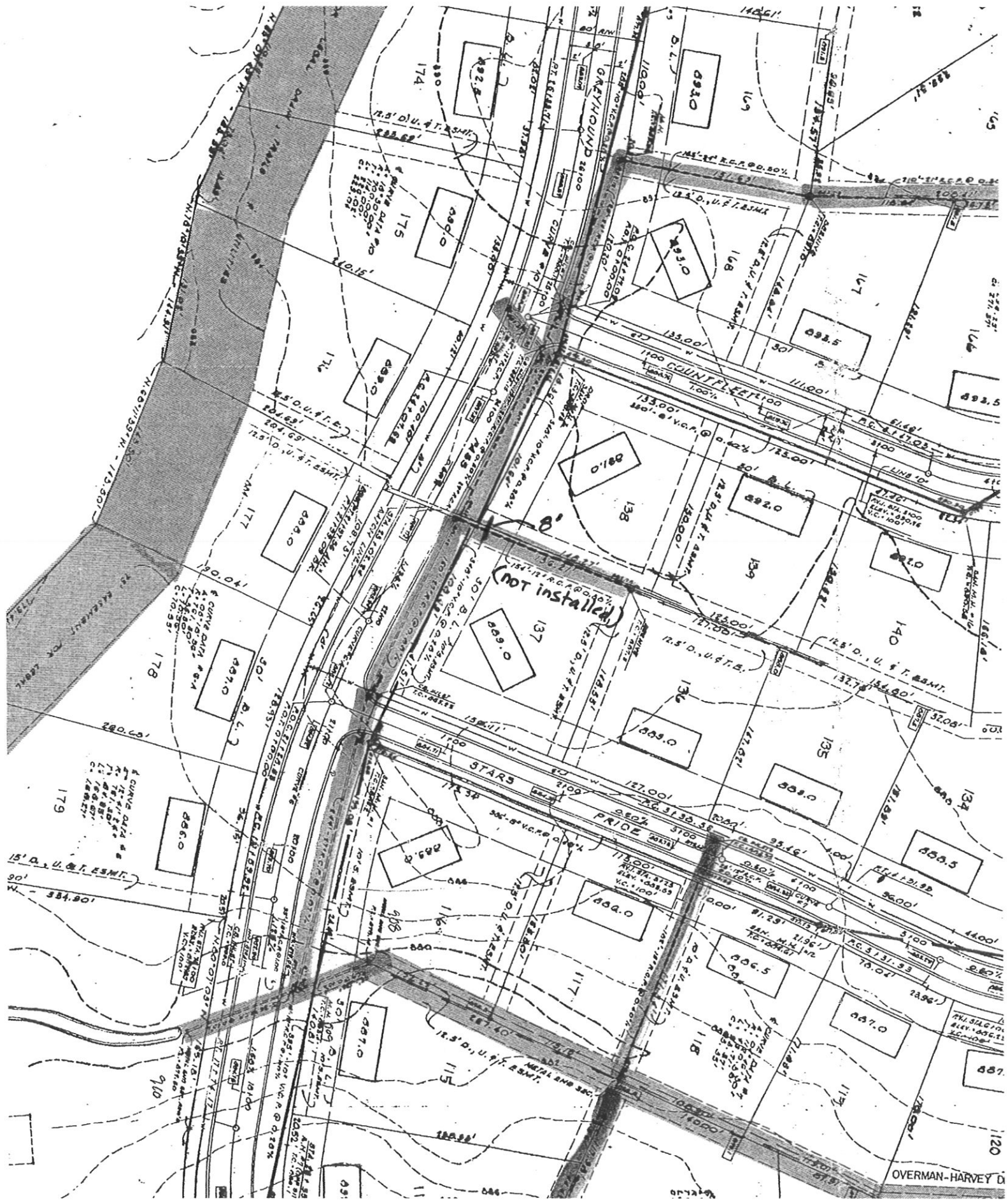
New Length: 3117.39

Verified By: SAB

Notes & Sketch:

During field investigation it was discovered that only 8 feet of 12" RCP was installed in structure 128 in the northeasterly direction. The plan had originally proposed and shown 156 feet of 12" between structures 128 to 129. It should also be noted that structure 129 was never installed. The pipe is stubbed with a private 6" SSD tied into the end of it. The investigation was done as a part of WO-2010-00241.

Suzanne L. Mills
GIS Specialist



(not installed)

OVERMAN-HARVEY D

174
175
176
177
178
179
180
181
182
183
184
185
186
187
188
189
190
191
192
193
194
195
196
197
198
199
200

STARS
PRIDE
COUNTRY
GAINGROUND
OVERMAN-HARVEY D

15' D. U. & T. E. S.M.T.
100% C.C.P.
100% V.C.P.

11000'
11100'
11200'
11300'
11400'
11500'
11600'
11700'
11800'
11900'
12000'

174.0
175.0
176.0
177.0
178.0
179.0
180.0
181.0
182.0
183.0
184.0
185.0
186.0
187.0
188.0
189.0
190.0
191.0
192.0
193.0
194.0
195.0
196.0
197.0
198.0
199.0
200.0